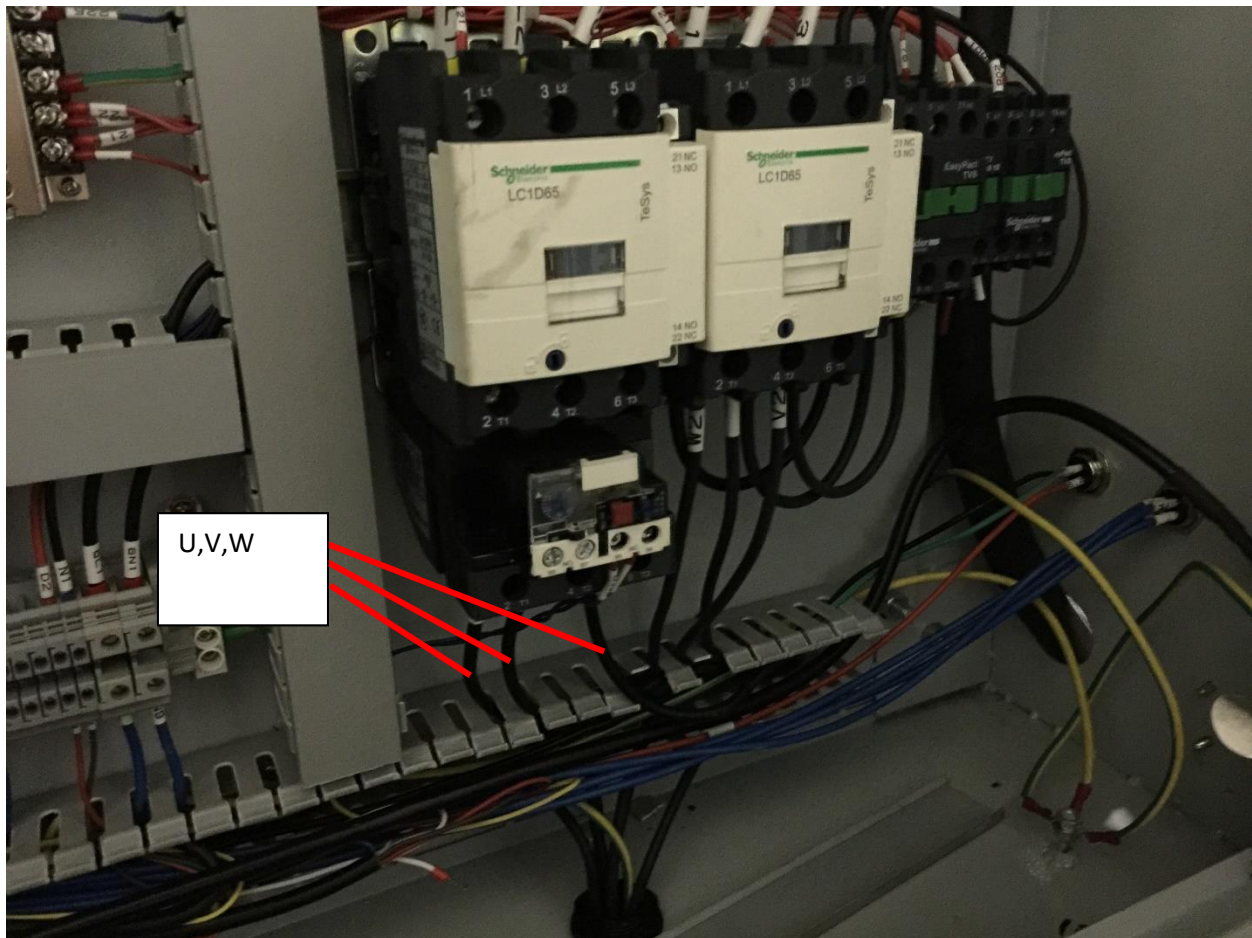


# Air chiller installation instruction

1. Prepare a 4 conductor wire.
2. For 3 of the conductors (U,V,W), connect one side to the air chiller and the other side connect to the pump like shown in the attached picture.
3. For remained conductor, connect it as PE to both air chiller and the pump.



To check if you install that correctly, turn on the power and if it inhale in the direction of from fan to cooling fin, it is working properly.

4. Next to connect the pipe:

Take off the 2 ends of pipes like shown in the picture below and connect them to the air chiller, A corresponds to the upper one and B corresponds to the lower one.

